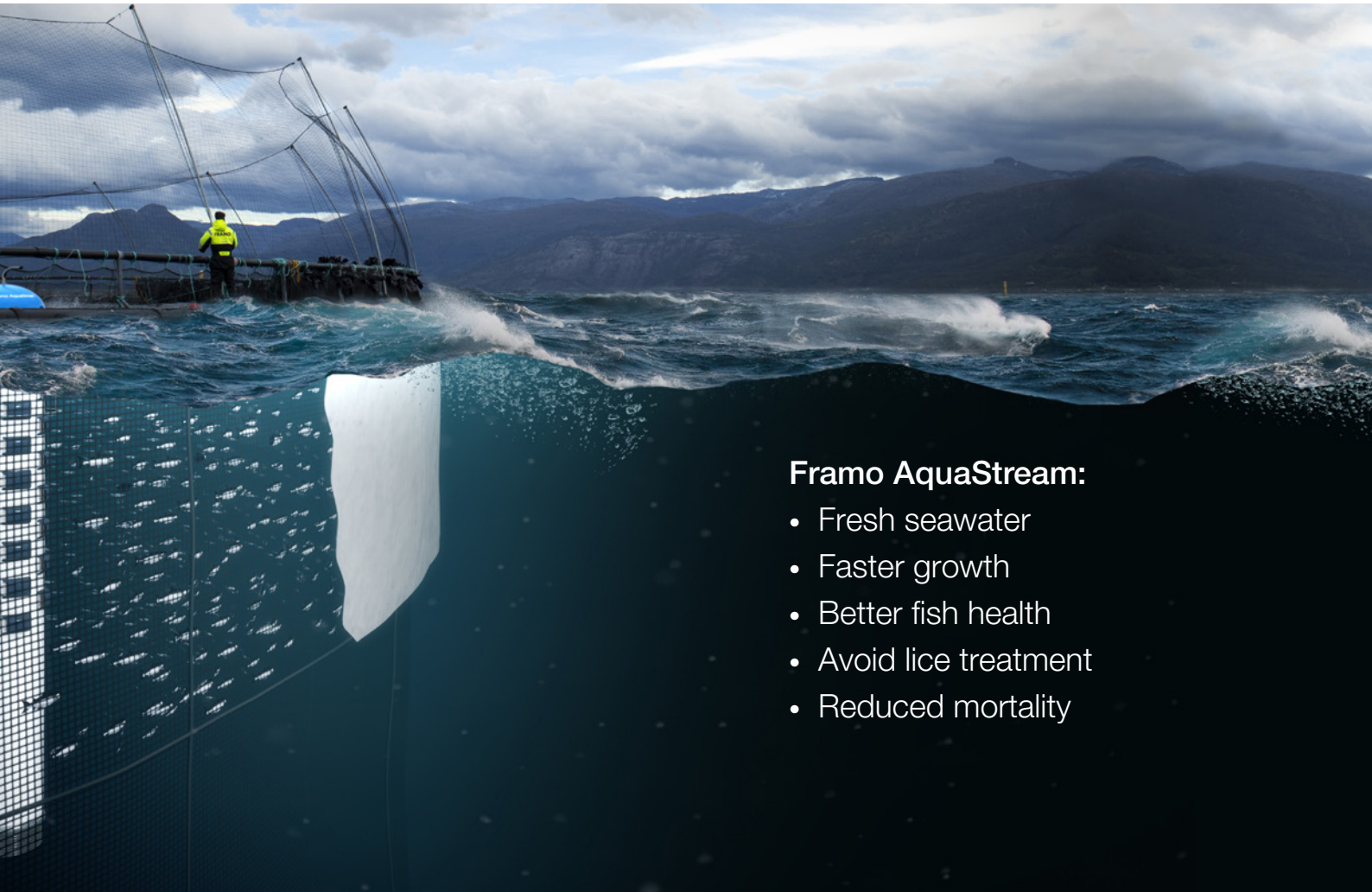


FRAMO AQUACULTURE

AquaStream

– Optimal conditions in the pen





Framo AquaStream:

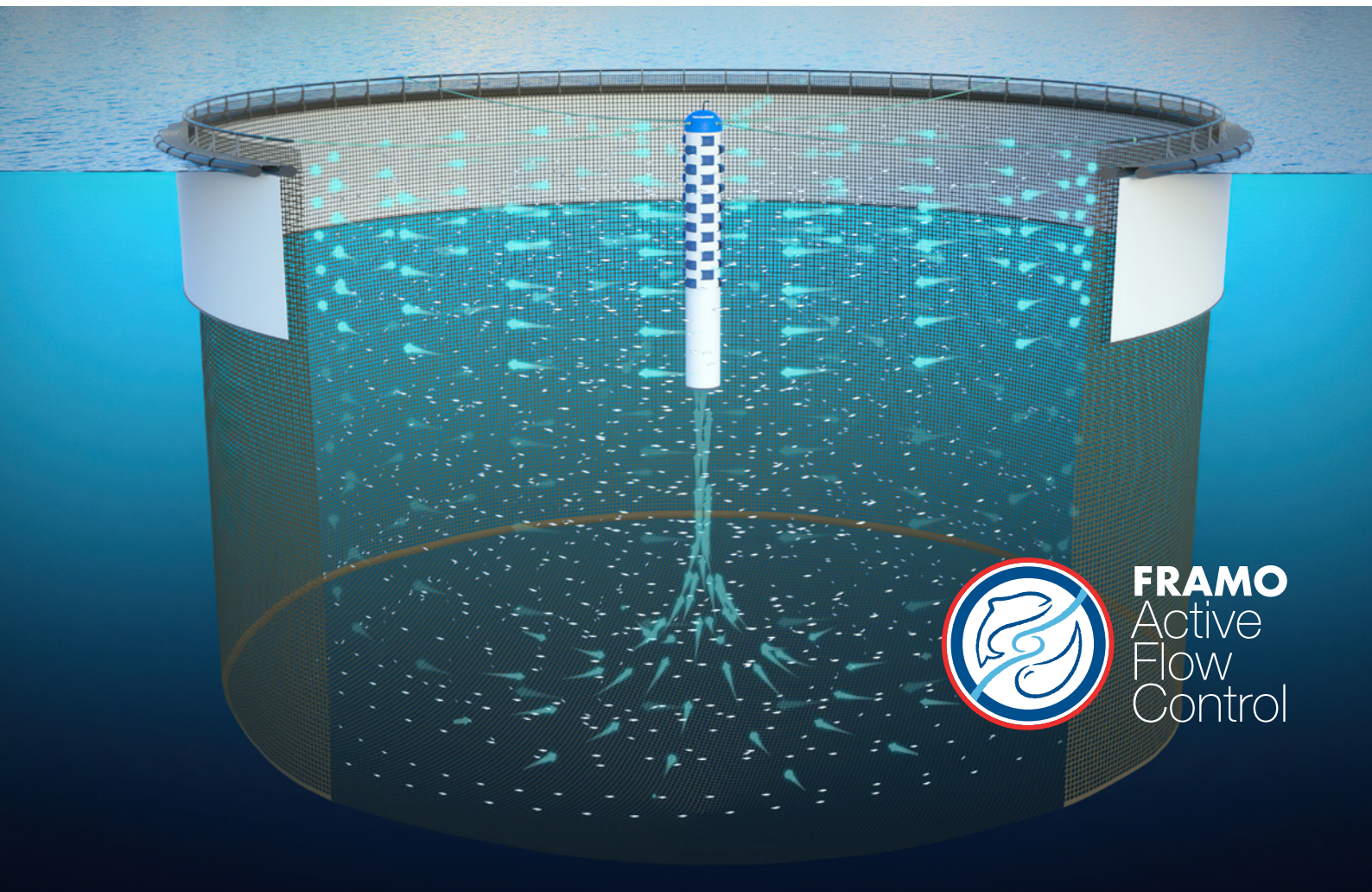
- Fresh seawater
- Faster growth
- Better fish health
- Avoid lice treatment
- Reduced mortality

How Framo AquaStream provides healthier fish and faster growth

The challenge Framo got from the fish farmers, is to recreate the natural currents and water exchange to obtain same optimal conditions as in the Norwegian fjords, by pumping fresh water into a pen with lice skirt.

Lice skirts in pens helps to reduce the lice problem, but at the same time reduce the water flow in the cage. With less water exchange and less oxygen, water quality deteriorates. This affects both fish health and fish welfare. With the Framo AquaStream, large amounts of fresh seawater are pumped up from under the algae and lice belt.

When AquaStream creates more currents in the cage, the fish become more active and develops a better appetite.



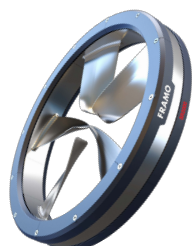
FRAMO
Active
Flow
Control

Framo AquaStream

AquaStream



SR2000



Innovative products based on proven technology

Framo is a world-leading supplier of pumping technology to chemical tankers and offshore market. Common to both these industries are extreme demands both performance, reliability and Safety. We have taken these requirements with us into the aquaculture industry.

Through many years of collaboration with Norwegian fish farmers, we have developed good functional and reliable solutions for the aquaculture industry. Including complete solutions for completely and partially closed pens. These solutions handle water supply, water quality, and sludge management.

As a system supplier, Framo also supplies the control system. We have step-less capacity control with local frequency converters. The system can be centrally controlled or it can be connected to other control systems, as well as remote control.

What you should know about Framo AquaStream

AquaStream is a complete pumping system for cages with lice skirts. Integrated in Framo AquaStream is the SR2000 pump, duct tunnel with nozzle tower, strainer, float and control system.

SR2000 is a permanent magnet motor, rim-driven flow generator, designed to pump large amounts of water in systems with low back pressure. The efficient pump has water-lubricated bearings. There is no lub-oil in the system and the engine has no gears nor shafts

Typical capacities are between 2,8 and 5,6 m³ iper second.

Technical data:

Amount of water (m ³ /h)	15.000
Effect (kW)	15
Material	Pump in stainless steel
Weight (kg)	Totalt 2000
Dimension transport	Ø 2000 mm x 2,4 m
Dimension operation	Ø 2000 mm x 20 m



framo.com

FRAMO Innovation Head office

P.O. Box 23, NO-5329 Florvåg, Norway
Phone: +47 55 99 90 00
E-mail: innovation@framo.no

FRAMO Nederland

Edisonweg 18
P.O. Box 305
NL-3200 AH Spijkenisse
The Netherlands
Phone: +31 181 619311
nederland@framo.no

FRAMO Houston

3002 East 13th Street
La Porte, Texas 77571, USA
Phone: +1 281 884 4800
houston@framo.no

FRAMO Singapore

17 Tuas View Circuit
Singapore 637575
Republic of Singapore
Phone: +65 6210 2400
singapore@framo.no

FRAMO Nippon

Kotsu Building 5F, 15-5
Shinbashi, 5-chome
Minato-ku
Tokyo 105-0004, Japan
Phone: +81 3 5776 2405
tokyo@framo.no

FRAMO Korea

Rm 608, Centum Sh Valley
35, Centum Dong – Ro
Haeundae – Gu, Busan
Korea, 612-020
Phone: +82 51 743 6942/3
busan@framo.no

FRAMO Shanghai

Building No.5, 123
Lane 1165, Jin Du Road
Min Hang District, Shanghai
China 201108
Phone: +86 21 6115 5000
shanghai@framo.no

FRAMO do Brasil

Av. Presidente Vargas, 463
/19º andar, Rio de Janeiro
CEP 20071-003, Brazil
Phone: +55 21 2507 7898
brasil@framo.no

FRAMO Middle East

Al Quoz Industrial Area
P.O. Box 21467
Dubai, United Arab Emirates
Phone: +971 4 346 9143
dubai@framo.no

FRAMO Service

P.O. Box 44
NO-5329 Florvåg, Norway
Phone: +47 55 99 92 00
service@framo.no

FRAMO Fusa

Venjanaset
NO-5641 Fusa, Norway
Phone: +47 55 99 96 00
marine@framo.no

FRAMO Holsnøy

Rosslandsvegen 933
NO-5918 Frekhaug, Norway
Phone: +47 55 99 75 00
piping.marine@framo.no

FRAMO Flatøy

Flatøyvegen 24
NO-5918 Frekhaug, Norway
Phone: +47 55 99 94 00
oil&gas@framo.no